



BOP Test Equipment



Benefits

- Incorporated into air-operated pump assembly of the BOP Control System
- Light for transportation
- Easy to be used
- Reliable
- Customized with accessories and specific solutions

Accessories

- Single or multiple pump system with or without hand pump
- Filtration system
- Hose Assemblies with connections, fittings and adapters
- Chart recorder
 - supplied with a higher working pressure than the test unit to allow for an easily visible reading at the desired test pressure
 - feature either battery-operated drive or "wind-up clock" style drive
 - integrated within the skid frame with the pump unit for a more compact design and an easier transport
 - upon request, it can be supplied on a portable separated skid-mounted metallic frame for an easy monitoring and recording test pressure without interference from the vibration experienced by typical test unit-mounted chart recorders



General Description

HP's range of BOP Test Equipment is designed for high pressure testing of BOP stacks, kill lines, choke, Christmas trees, and several other types of equipment requiring high pressure static testing.

Test units are available in unit-mounted, portable, skid-mounted, and self-contained skid-mounted options.

HP can also provide all the related accessories, including stand-mounted or integrated chart recorders and high pressure hose assemblies.

Typical Applications

HydroPneumatic BOP test units are typically the perfect solution for field testing of high pressure equipment

Features

- Available in 5k, 10k, 15k, and 20k PSI working pressure models; higher pressure model available upon request
- Completed with all the safety systems and accessories
- Dimensions and Weight customized to meet customer needs
- Available in the following design:

- **Portable Test Units:**

- Single pump mounted on a light metallic frame, resulting in easy transport to and from the test site
- Available in 5k or 6k PSI working pressure model

- **Skid-Mounted Test Units:**

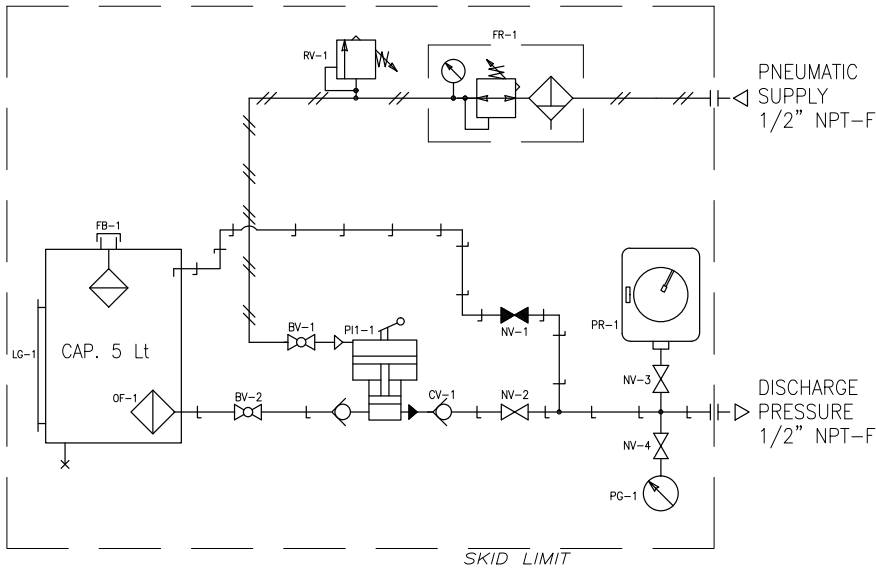
- Versatile service in all static, high pressure testing applications
- Equipment safely tested up to 20k PSI thanks to its compact, easy-to-operate design
- High pressure air-operated pumps, valves and fittings for trouble-free operation
- Inclusive of all the necessary controls and safety devices, as well as the connections for air and water supplies

- **Self-Contained Test Units:**

- Features as per **skid-mounted test units** but complete with reservoir
- Provide convenient control for close and open operation of the valve or the preventer being tested



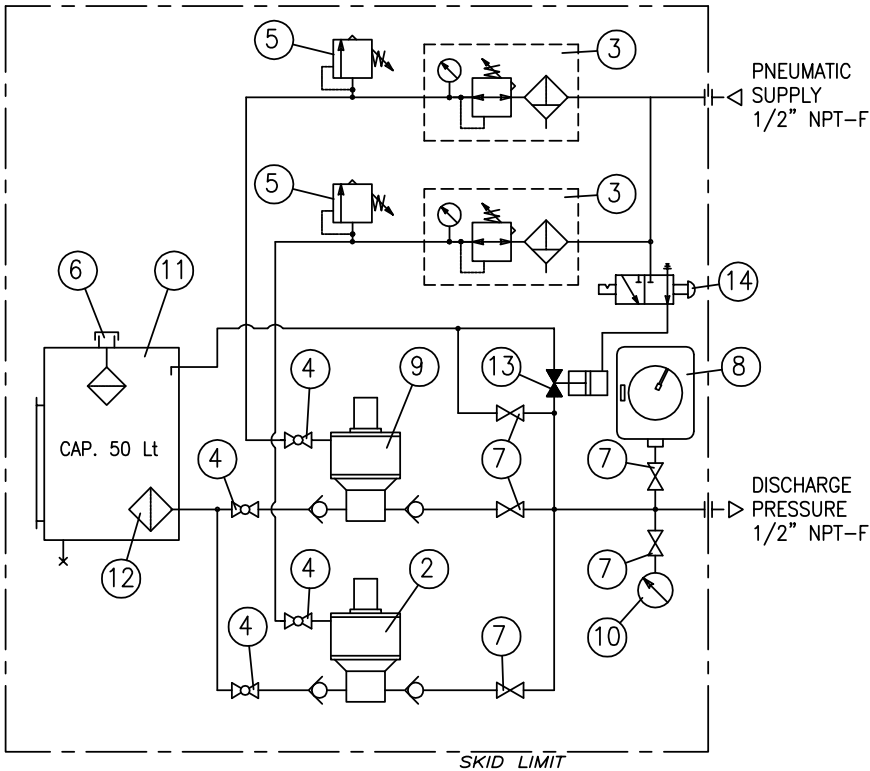
Single High Pressure Pump with hand pump



Items

Item	Description	Quantity
RV	Relief Valve	1
PR	Pressure Recorder	1
PI1	High Pressure Pump	1
PG	Pressure Gauge	1
OF	Oil Suction Filter	1
NV	Needle Valve	4
LG	Level Gauge	1
FR	Filter / Regulator / Pressure Gauge	1
FB	Filler and Breather Cup	1
CV	Check valve	1
BV	Ball Valve	2

Double Pump, Double Pressure



Items

Item	Description	Quantity
2	Low Pressure Pneumatic Pump	1
3	Filter / Regulator / Pressure Gauge	2
4	Ball Valve	4
5	Safety Valve	3
6	Filling Cup with Aerator	1
7	Needle Valve	5
8	Pressure Recorder	1
9	High Pressure Pneumatic Pump	1
10	Pressure Gauge	1
11	50lt Capacity Oil Tank w/ Level Gauge	1
12	Suction Filter	1
13	Automatic Discharge Interface Valve	1
14	Manual Reste Pneumatic Relay	1